

WHAT'S NEW IN CMM-Manager Version 3.0



December 20, 2010

Nikon Metrology, Inc.

1. Introduction

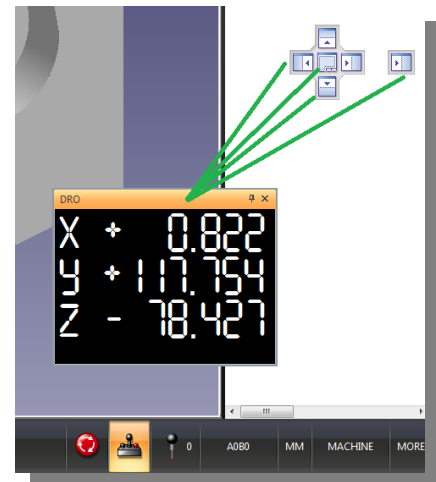
Nikon Metrology is pleased to announce the release of CMM-Manager version 3.0. This release adds the following major new features/functions/enhancements:

- New Graphical User Interface
- PH20 Probe Head Support
- Portable Localizer UI Improvements (Arm, K-CMM, etc.)
- Windows 7 including Mini Tablet Compatibility
- Enhanced Dual Monitor Support
- Workflow Situation Awareness
- Pre-Configured Shop Floor Launcher
- Excel 2010 compatibility

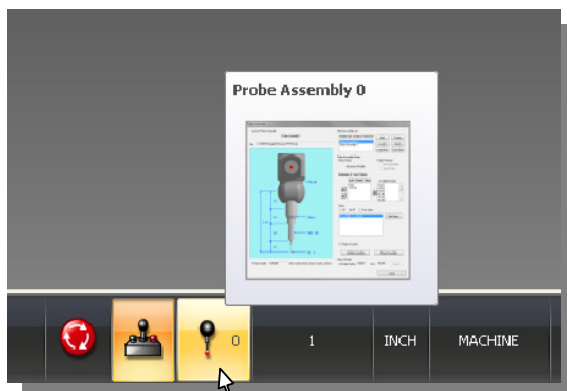
See below for additional enhancements.

2. New Graphical User Interface

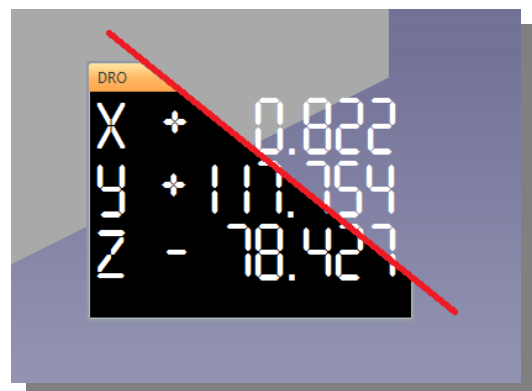
- Ribbon Bar Style Layout
- New Icons through-out
- Highly customizable floating, docking and sliding panes
- Transparent Heads Up Display Style DRO
- Enhanced interactive status bar
- Graphical Tool Tips
- List / Toolbox Task Panel



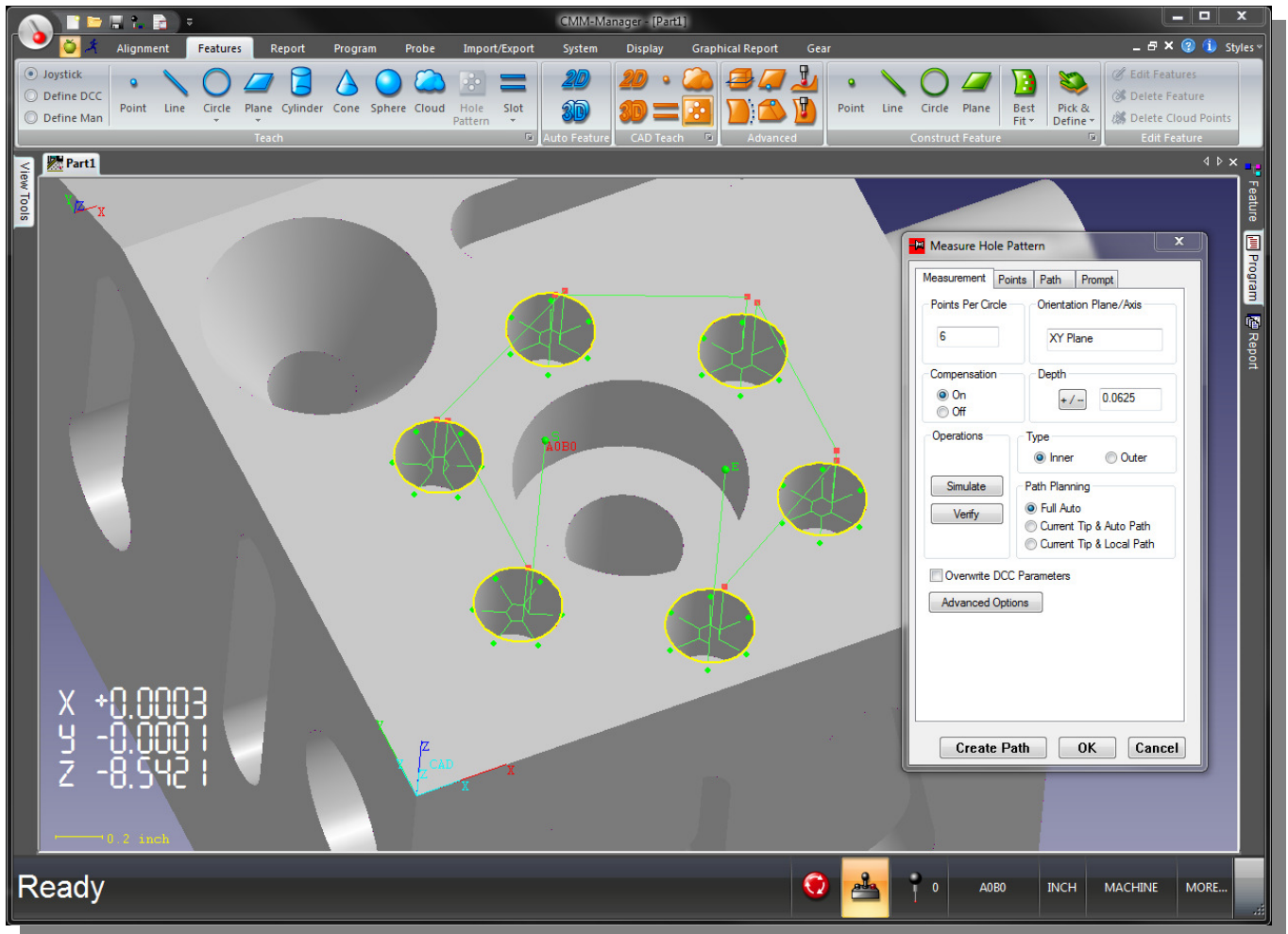
Auto Docking & Sliding Panes



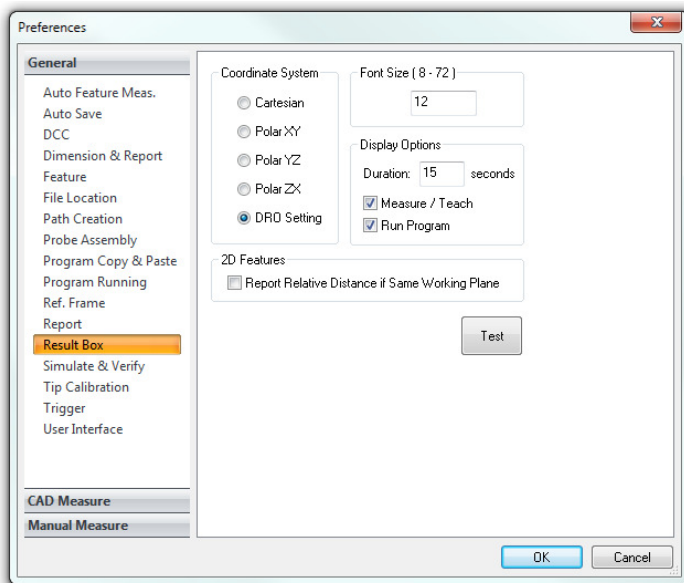
New Status Bar with Graphical Tool-Tips



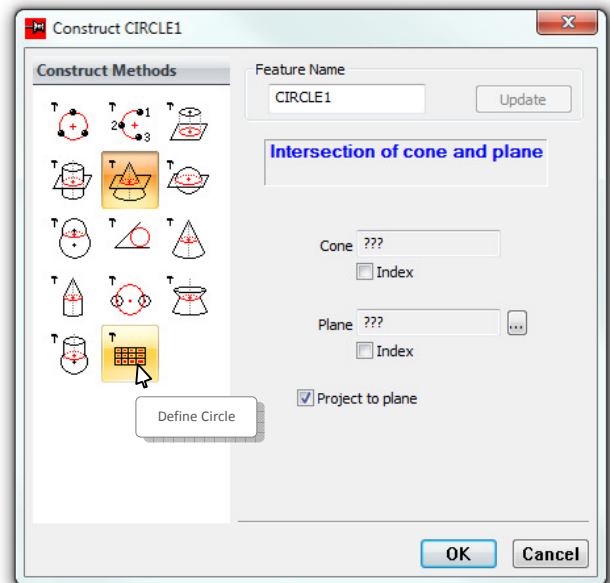
Choose Classic or Transparent DRO



Ribbon Layout & New Icons



ToolBox / List Style Navigation



Updated Controls & Dialogs

3. PH20 Probe Head Support

- Utilizes “Head Touch” probing to measure points by moving only the probe head rather than the entire CMM structure
- 3x throughput increase over PH9/PH10 probing
- 5 axis blended moves – eliminates traditional probe indexing
- Easily convert existing CMM-Manager programs by using a single PH20 head touch on/off command

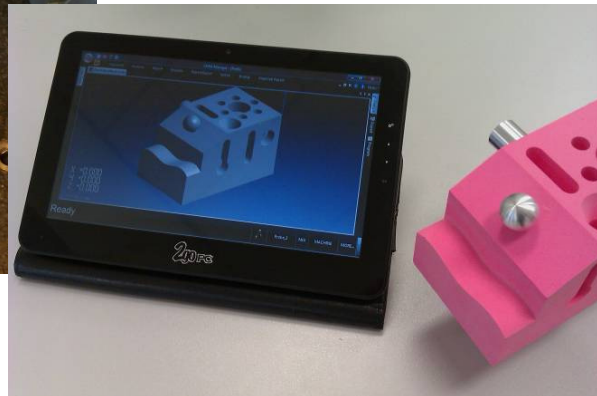


4. Portable Localizer / UI Improvements

- User settings to control dialog locations, sliding panel behaviour, auto feature measure, automatic feature selection for Alignments & Constructions
- Numerous HID options – Mouse, Touch-screen, Mouse Mode, Android™ Remote – all provide easy navigation of Ribbon Bar layout
- WiFi Communication and Battery operation allows MCA2 to operate completely wireless

5. Windows Mini Tablet Support

- Connect to any Serial, USB or WiFi measuring device
- Support screen resolutions down to 1024 x 600
- Touch Screen support for simplified Shop Floor Launcher interface



6. Dual Monitor Support

- Tear away tabs allow docking of Report, Live Vision / Video view, or Database panels on second display

7. Situation Awareness

- Automatic Ribbon Bar and Mode selection
- Slide open feature database panel when Reporting, Constructing, Aligning
- New User Preferences to control default mode – Teach Mode / Measure Mode

8. Preconfigured Shop Floor Launcher

- Easy Access to simplified measurement routines
 - Distances
 - Angles
 - Sizes
- Full Report output including Graphical Reporting

9. Excel 2010 Compatibility

- Output / Save Report to Microsoft Excel up to version 2010

10. New Controller Support

- I++ DME Interface
- Nikon iProbe Tactile Measurement Probe

Android is a Trademark of Google Inc. Use of the trademark is subject to Google Permissions

- End -