

WHAT'S NEW IN CMM-Manager Version 3.1



December 12, 2011

Nikon Metrology, Inc.

Nikon Metrology is pleased to announce the release of CMM-Manager version 3.1. This release adds the following major new features/functions/enhancements:

- Improved CAD Import and Export
- PH20 Probe Head Enhancements
- I++ Interface Enhancements
- New Controller Support – Nikon, Zeiss, Deva & Insight
- CMM-Manager Feature Tab now in Focus Handheld
- Updated View Manipulation Settings
- Numerous UI and Settings Enhancements

See below for additional enhancements.

1. Improved CAD Import and Export

- .Step and .VDA now standard in addition to .IGES and .DXF
- Improved .IGES Import
- Export Measured Cloud as 2D .DXF Curve
- Support for Spatial Direct CAD Importer
 - ACIS, CATIA V4/V5, Inventor, Parasolid, Pro/E, Solidworks, UG



2. PH20 Probe Head Enhancements

- Block Mode Execution yields faster program execution / machine movement
- Fly Mode allows blending of 3D probe paths, yields faster program execution
- All Axes Head Touch - combines 3D movement with Head Touches
 - Plane, Line, Point, Cloud, OD / ID Cylinder / Circle, etc.
- Improved Probe/Tip Synchronization with UCC Server
- New dedicated PH20 User Settings / Preferences
- Auto Path Planning – Reduced unneeded clearance moves



3. I++ Interface Enhancements

- Added full support for PH10 probe system
- Added support for thermal compensation
- Allows multiple probe assemblies by default

4. New Controller Support

- Zeiss C98
- Deva 4 axis CMM Controller
- Insight Metrology USB Manual Interface

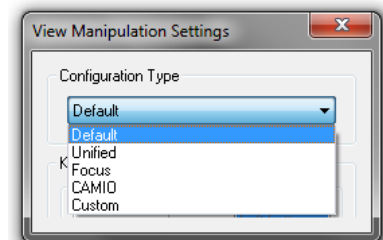


5. CMM-Manager Feature Tab now in Focus Handheld

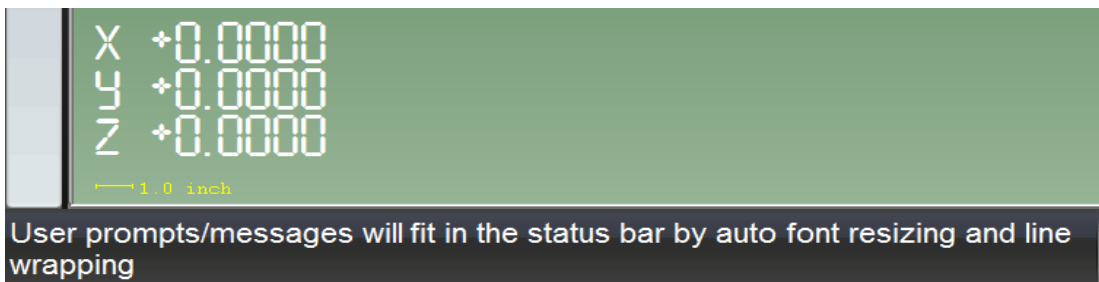
- Seamlessly integrates into Focus Handheld
- Contains Feature tab only for tactile measurement

6. Updated View Manipulation Settings

- Added unified configuration for all Nikon metrology software
- Added legacy Focus and Camio configurations
- Retained default CMM-Manager and Custom Options



7. Numerous UI and Settings Enhancements



- User prompts/messages will fit in the status bar by auto font resizing and line wrapping
- Allows keyboard shortcut for Pin (Ctrl+R) and Unlock (Ctrl+E) commands
- "Auto Sync CAD" option set to true by default
- "Auto Select Last Created Features" option set to true only for portable localizers
- Made background color of edit boxes in dialogs more distinguishable: editable v.s. read-only

8. Additional Enhancements

- Added option to extract raw data with probe compensation
- Added option in Auto Save Results to auto save Program Summary after each program run
- Allows user to input length for all supported features in Report Parallelism, Perpendicularity and Angularity
- Allows DDE output for composite position report
- Allows JPEG image import for offline vision inspection
- Moved user note location from below to above each report item in the RPT report output

- End -