

# WHAT'S NEW IN CMM-Manager Version 3.4

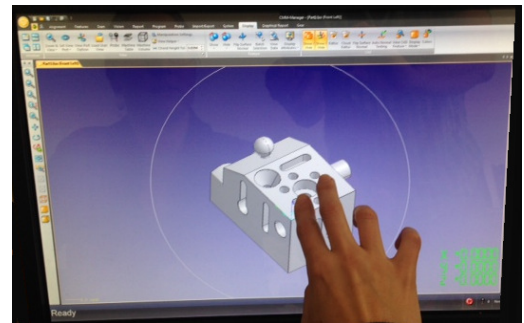


April 18, 2014

**Nikon Metrology, Inc.**

Nikon Metrology is pleased to announce the release of CMM-Manager version 3.4. This release adds the following major new features/functions/enhancements:

- Unified Nikon Metrology License / Dongle Support
- Improved IGES Import
- New DCC Tip Calibration Options
- More Batch Run Options for Multi-Part Fixture Arrangements
- Enable Live Report in Run Mode
- VB Script Variable Defined User Notes
- Enhanced Global Security Settings
- Automatic Help Desk File Export
- Multi-Touch & Focus style graphics manipulation
- Microsoft Windows 8 / Excel 2013 support

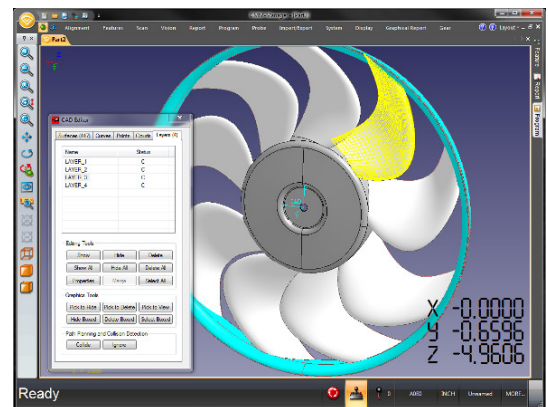


## 1. Unified Nikon Metrology License / Dongle Support

- All Nikon Metrology 3D Software Products now use a unified license and dongle
- New features include:
  - Network / Site License
  - One License for up to three software products (CAMIO, CMM-Manager & Focus)
  - Softlock license – USB Dongle optional

## 2. Improved IGES Import

- CAD Layer Support
  - Options to show / hide and include / omit for Path Planning
- IGES import healing option
  - Automatically fix surface trimming



## 3. New DCC Tip Calibration Options

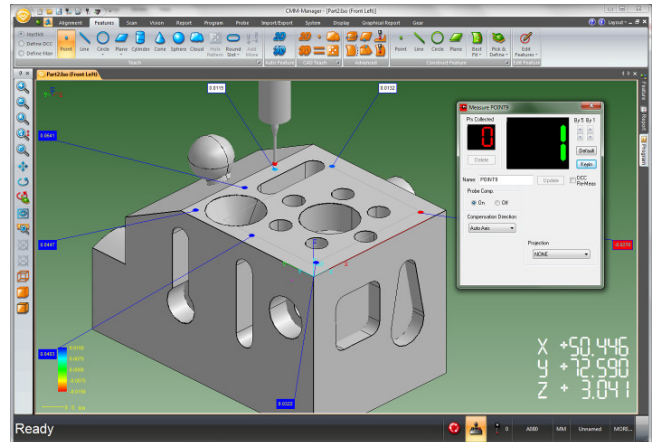
- Spend less time calibrating probe tip angles
- All DCC Tip Calibration options now include:
  - Calibrate One Tip / All Tips / All New Tips / All Tips Required for Current Program

#### 4. More Batch Run Options for Multi-Part Fixture Arrangements

- In addition to linear part arrangement / spacing, now rectangular grids can be specified
  - Specify number of rows / columns of parts and spacing
  - Optionally, specify angular offset for offset rows / columns

#### 5. Enable Live Report in Run Mode

- After Program Execution any Measured Point(s) will be compared to CAD automatically if Live Report Preference is enabled

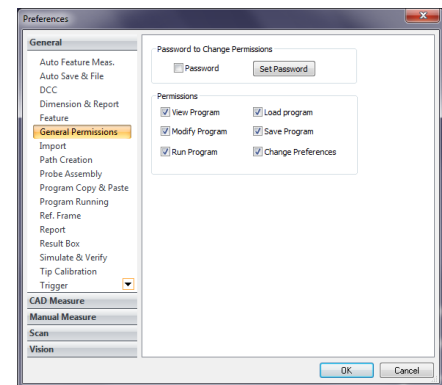


#### 6. VB Script Variable Defined User Notes

- Allows more flexibility for parametric program including User Notes
- User Note Report text can now be assigned via VB Script variable

#### 7. Enhanced Global Security Settings

- Prevent unauthorized program and software changes
- Globally assign permissions including:
  - View, Modify, Run, Load and Save Programs
  - Change Preferences
- Option for password protection



#### 8. Automatic Help Desk File Export

- Spend less time looking for files
- Single button click to export all files required for Help Desk submission



#### 9. Additional Enhancements

- Multi-Touch graphics manipulation support for Multi-Touch displays
- Included Nikon's Focus style graphic manipulations
  - 3D Orbit and 2D Rotate
- Official Microsoft Windows 8 / 8.1 Support
- Microsoft Excel 2013 Report & DDE Output
- Added Profile of Point for DMIS execution
- Updated Spatial - InterOp Native CAD importers to R24SP2
  - See Release Notes for details on supported CAD formats / versions

- End -