

WHAT'S NEW IN CMM-Manager Version 3.5



August 12, 2015

Nikon Metrology, Inc.

Nikon Metrology is pleased to announce the release of CMM-Manager version 3.5. This release adds the following major new features/functions/enhancements:

- Nikon iNexiv / VMA Support
- Deva USB Camera Support
- Edit Report directly from Report View
- PDF Report Output
- Direct QC Calc Output
- Avoid Furniture / CAD
- Allow Edit of Operation Plan
- Recall Gear Module Alignments
- InterOp R25

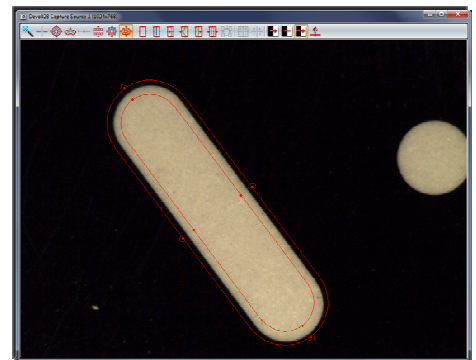


1. Nikon iNexiv / VMA Support

- 3D Multi-Sensor Metrology Software support for Nikon iNexiv
 - 2D / 3D CAD Import
 - CAD Teach - Touch Probe and Vision Probe
 - Lighting – Top, Bottom & Eight Segment Ring
 - Laser Auto Focus Z Depth Measurement
 - Rotary Index – fully controlled with feedback loop
 - Automatic Probe Changer

2. Deva 036 Camera Support

- Digital USB Camera for CMM Retrofit
 - 3 Mega-Pixel Color Camera
 - 16 White LED Ring Light
 - PH10M Compatible

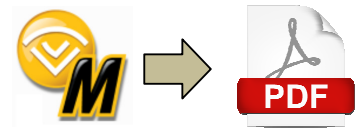


3. Edit Report directly from Report View

- Double-Click from Report View to open Report Operation
- Yields Faster Report Editing by Editing Report Directly vs. Editing in Program

4. PDF Report Output

- Direct Export of CMM-Manager Report as .PDF
- Reduce Extra Steps of Converting Report to .PDF Format.



5. Direct QC Calc Output

- Direct QC-Calc export.
- Allows QC-Calc export for Foreign Language users.



6. Avoid Furniture / CAD

- Permanently locate CAD model for Tool Racks, Cal Sphere, Fixture, or any permanent obstacles in CMM volume.
- Furniture Participates in Path Planning / Collision Avoidance



7. Allow Edit of Operation Plan

- Remove Operations From Operation Plan after Creation.

8. Recall Gear Module Alignments

- Recall Previously Saved Ref Frame for Gear Module Measurements
- Save Time by Skipping Manual Alignment for Each Gear Inspection

9. InterOp R25

- Newest Version of Native CAD Import
- Installed Separately From CMM-Manager Application
 - Available as 32 bit & 64 bit version



10. Additional Enhancements

- Added Gasket Scan For I++ SP25 Scan Measurement
- Set Smaller Default Chord Height Tolerance & make Persistent
- Allow Live Deviation for CAD Taught / DCC Measured Points
- Improve Default Settings For IGES CAD Import
- Fixed DDE (Dynamic Data Export) Preview
- Added Support for Tesastar-i-M8 Probe

- End -