

WHAT'S NEW IN CMM-Manager - 3.7 SP1

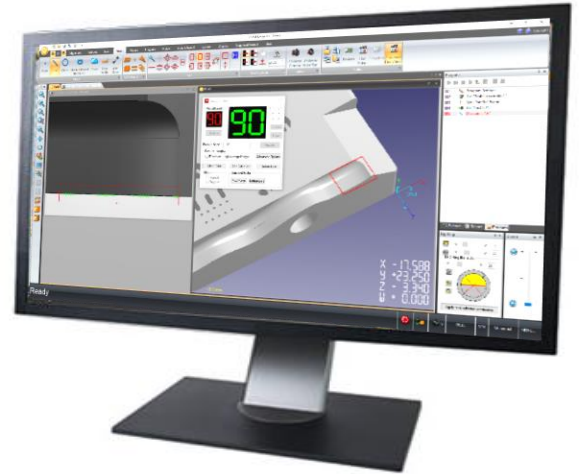


December 15, 2017

Nikon Metrology, Inc.

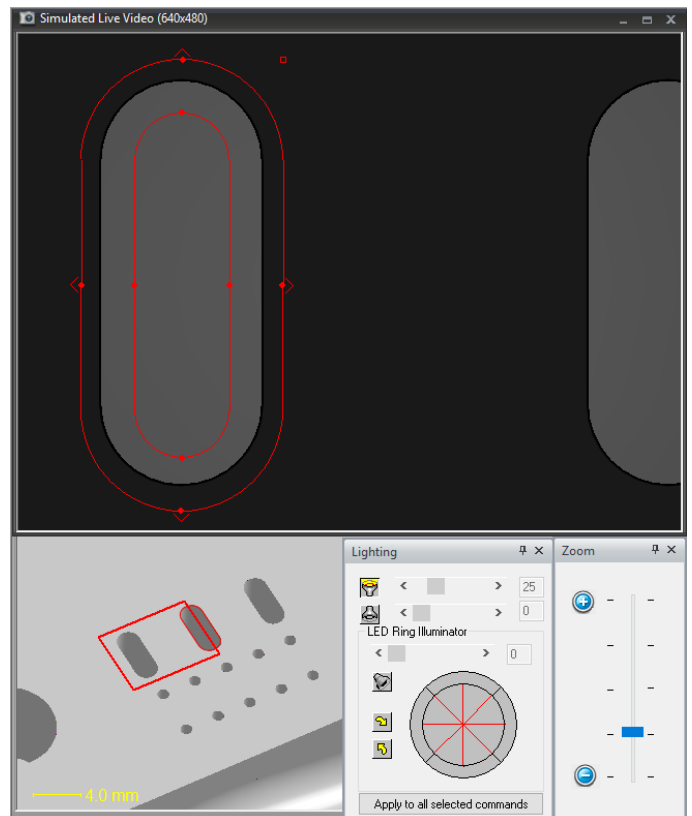
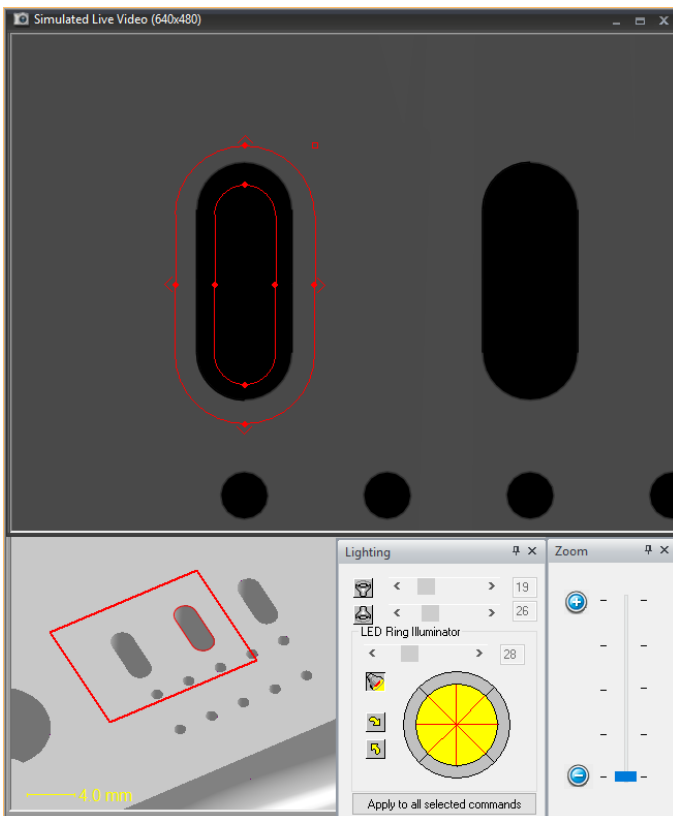
Nikon Metrology is pleased to announce the release of CMM-Manager version 3.7 SP1. This release adds the following enhancements:

- Improved Vision Offline Programming
 - Simulated Camera View
 - Simulated Lighting & Zoom
 - Offline Pattern Recognition
- Conditional Report Database OOT Color
- Live Video in Shop Floor Launcher
- Updated Microscribe Arm Support
- Full Auto Path Planning for TESA Probe



Improved Vision Offline Programming

- Create robust vision programs faster without interrupting online production environment
 - Simulated Live Camera View – coordinated with camera FOV in CAD Display
 - Simulated Episcopic, Diascopic, Ring Lighting and Zoom
 - Capture Pattern Recognition Images Offline

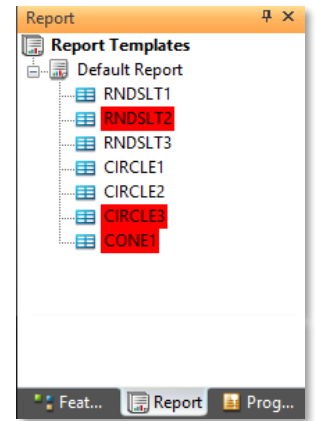
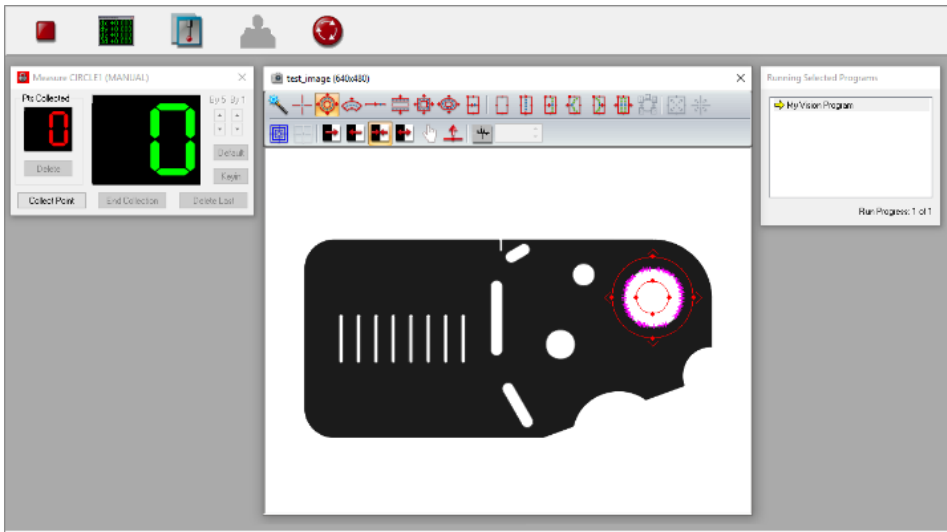


Conditional Report Database OOT Color

- Quickly identify out of tolerance report objects in Report Database

Live Video in Shop Floor Launcher

- Visualize and execute manual Vision operations in SFL

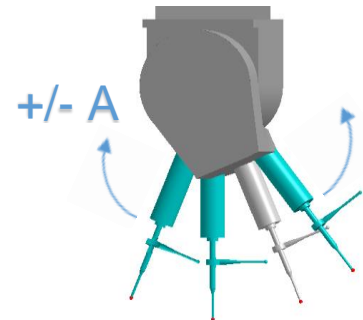


Updated Microscribe Arm Support

- Added support for latest Revware SDK / Drivers

Full Auto Path Planning for TESA Probe Head

- Automatically find most efficient probe path for supported TESA probe heads
- Added (-A) Probe Angle for Full Auto Path Planning



Language Support:

- English, Chinese, French, German, Japanese, Polish, Spanish, Czech and Italian

Bug Fixes:

- Prevent hidden dialog boxes when using Shop Floor Launcher
- Fixed Graphic Report Text, Spike, and Disc color for unilateral tolerance
- Improved point spacing for Edge, Cross Section, and 2D Complex touch-probe scanning
- Fixed iNexiv Laser AF execution related to DCC parameters
- Fixed Transform / Copy Tip rounding error
- Fixed slow Excel DDE and software crash when using Excel append report option
- Fixed SP25 Gasket Scan Arc direction for surfaces with (-Z) normal vector

PC Requirements:

- CPU ----- Intel i7 / AMD FX 3.0 GHz or above
- OS ----- 32 / 64 bit - Windows 7, 8, 10
- Disc / Ram ----- 500 GB / 8 GB or more recommended
- Graphics Card ----- 1920 x 1080 (v3.0+ includes dual monitor support)
- PCI Slot ----- Mini tower to accommodate full height PCI card if needed