

# WHAT'S NEW IN CMM-Manager - 3.9 SP1

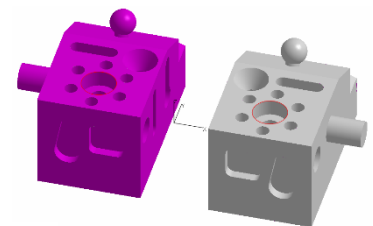
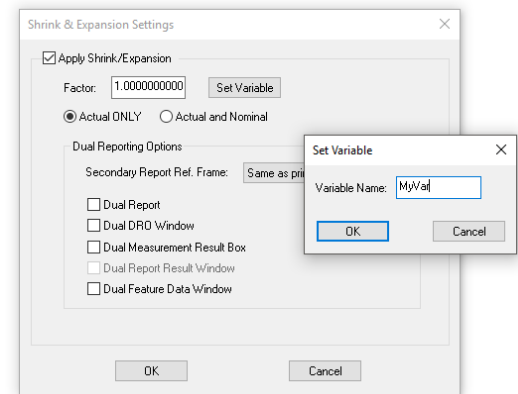
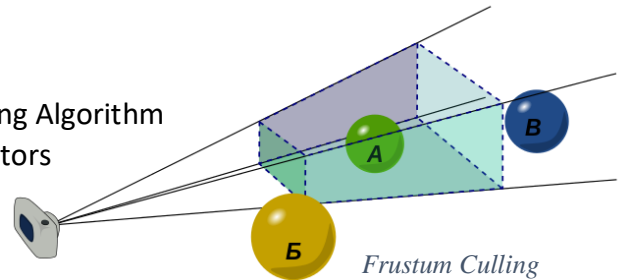


August 27, 2019

Nikon Metrology, Inc.

Nikon Metrology is pleased to announce the release of CMM-Manager version 3.9 SP1. This release includes the following enhancements and bug fixes:

- 3D Graphics Rendering Performance
  - Improved 3D CAD rendering using Frustum Culling Algorithm
  - Fixed missing 2D elements with some Intel adaptors
  - New OpenGL Driver Info from About Dialog
- Reporting Enhancements
  - Shrink Factor up to 10 decimal precision
  - Shrink Factor can be set by VB variable
  - Fixed missing Legend on new Graphical Report
  - Fixed missing images for Report saved as MS Excel
  - Fixed missing last page when manually printing report
- Vision Measurement Enhancements
  - VMZ-R – CAD Teach 3D now includes Laser Scan Tool
  - Fixed endless loop for Closed Vision Edge Profile
  - Override iNexiv maximum Touch Speed to 5mm/sec
  - Multi-Point AF Tools persistent even for CAD Teach
- Robot / PLC / Automation
  - IPC interface for client software
  - Share current status for:
    - XYZ Scale, Rotary Axis Position & Probe Angle
    - Program Running / Idle
- Notable Bug Fixes
  - Improved Mirroring for program containing CAD based Alignment
    - Includes new user option to specify un-mirrored CAD axis
  - Inconsistent Probe Comp direction of Line constructed from Cloud
  - Improved display of Notes on Graphical Reports
  - Eliminate hang during I++ Sync with large number of tips and UCC Server
  - Fixed Deva DCC circular motion for RTP20 Probe Head indexing



## Language Support:

- English, Chinese, French, German, Japanese, Polish, Spanish, Czech and Italian

## PC Requirements:

- CPU ----- Intel i7 / AMD FX 3.0 GHz or above
- OS ----- 32 / 64 bit - Windows 7, 8, 10 – Pro, Ultimate, or Enterprise
- Disc / Ram ----- 500 GB / 8 GB or more recommended
- Graphics ----- 1920 x 1080 - On-board or Dedicated - NVidia / AMD / Intel
- PCI Slot ----- Mini tower to accommodate full height PCI card if needed