

WHAT'S NEW IN CMM-Manager - 3.10



July 31, 2020

Nikon Metrology, Inc.

Nikon Metrology is pleased to announce the release of CMM-Manager version 3.10. This release includes the following enhancements and bug fixes:

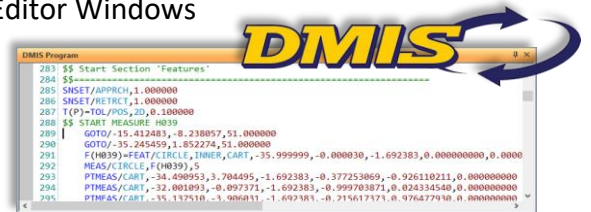
- PH20 Enhancements

- Easier and more Reliable 5 axis measurement path creation and editing
 - Improved Head Touch and 5 Axis Move Simulation
 - 5 Axis Path Planning – Improved Probe Reach and Tip Angle Selection
 - Improved Usability though clearer UI & Preferences



- DMIS Enhancements

- Improved legacy and 3rd party program execution
 - Added Line Numbers to DMIS Program & Editor Windows
 - New DMIS Commands Supported
 - THLDEF & SNSLCT/SA() – full Probe Rack operation
 - Circular Runout
 - BF / Best Fit Construction
 - Improved DMIS Program Execution related to Initial Ref Frame



- Reporting Enhancements

- Added Pass / Fail Status & Program Run Time to Report Header
- Expose Pass / Fail Status to VB Script and IPC Pipe
- Speed Improvements for Large Report or Large CAD Model Project
- Enable Touch Scrolling of Report for Touch Screen Systems
- Multiple MS Excel and DDE Related Enhancements
- Graphical Report Enhancements

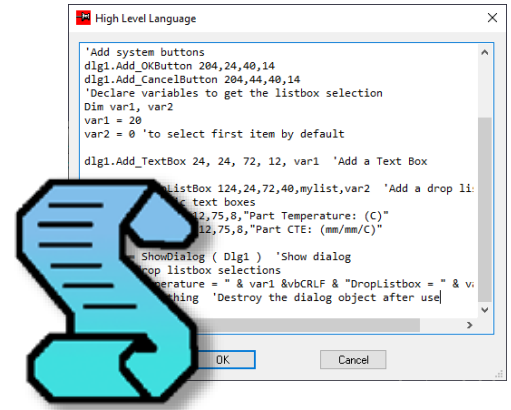
CMM-Manager Report	
Report Name	Default Report
Part Name	MyPartName
Part No.	MyPartNo
Inspector	User
Company	Nikon
Date	Thursday, July 30, 2020
Time	10:55 AM
Unit	MM
Pass/Fail	Pass
Program Runtime	00:05:13
Serial Number	777

- UI / Usability / Preferences / General Enhancements

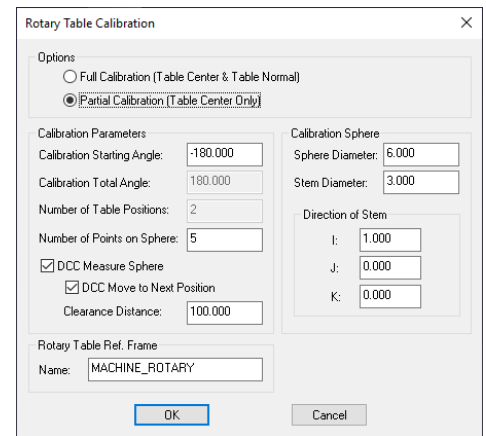
- XML Report to Summarize Non-Default Preferences
- Improved CAD Teach 2D Complex Picking from CAD
- Add Form Error Column to Tip Manager
- Tether “Change Preferences” Permission to Machine Setup Access
- Allow Running DCC CMM Program on Portable Arm

#1 Tolerance Report						
Feature	Nom	Act	Dev	LoTol	UpTol	OutTol
CIRCLE1						
Type						
SubType						
X	38.100	38.107	0.007	-0.127	0.127	
Y	49.213	49.213	-0.000	-0.127	0.127	
Z	0.000	0.000	0.000	-0.099	0.099	
DIA	9.525	9.521	-0.004	-0.100	0.100	
CIR			0.035		0.127	

- VB Script / Automation Enhancements
 - Additional VB Scripting capabilities means easier integration to your customized solution
 - Expose Current Batch Run Index to VB Script
 - Expose Pass / Fail Status to VB Script and IPC Pipe
 - Allow Resizing of VB Script Editor Window
 - Improved MS Windows Shortcut Key Support



- Driver Updates
 - Pantec Eagle / Wenzel DCC
 - Added support for Renishaw SP25 scanning
 - Zeiss C99
 - Added Renishaw PHC Setup Options
 - Rotary Table / Indexer
 - New Partial Calibration Option – reference rotary center without running full calibration



Language Support:

- English, Chinese, French, German, Japanese, Polish, Spanish, Czech and Italian

CAD Importer Support:

- Spatial 3D InterOp Release 2020 1.0.0.1

PC Requirements:

- CPU ----- Intel i7 / AMD FX 3.0 GHz or above
- OS ----- 32 / 64 bit - Windows 7, 8, 10 – Pro, Ultimate, or Enterprise
- Disc / Ram ----- 500 GB / 8 GB or more recommended
- Graphics ----- 1920 x 1080 - On-board or Dedicated - NVidia / AMD / Intel
- PCI Slot ----- Mini tower to accommodate full height PCI card if needed